

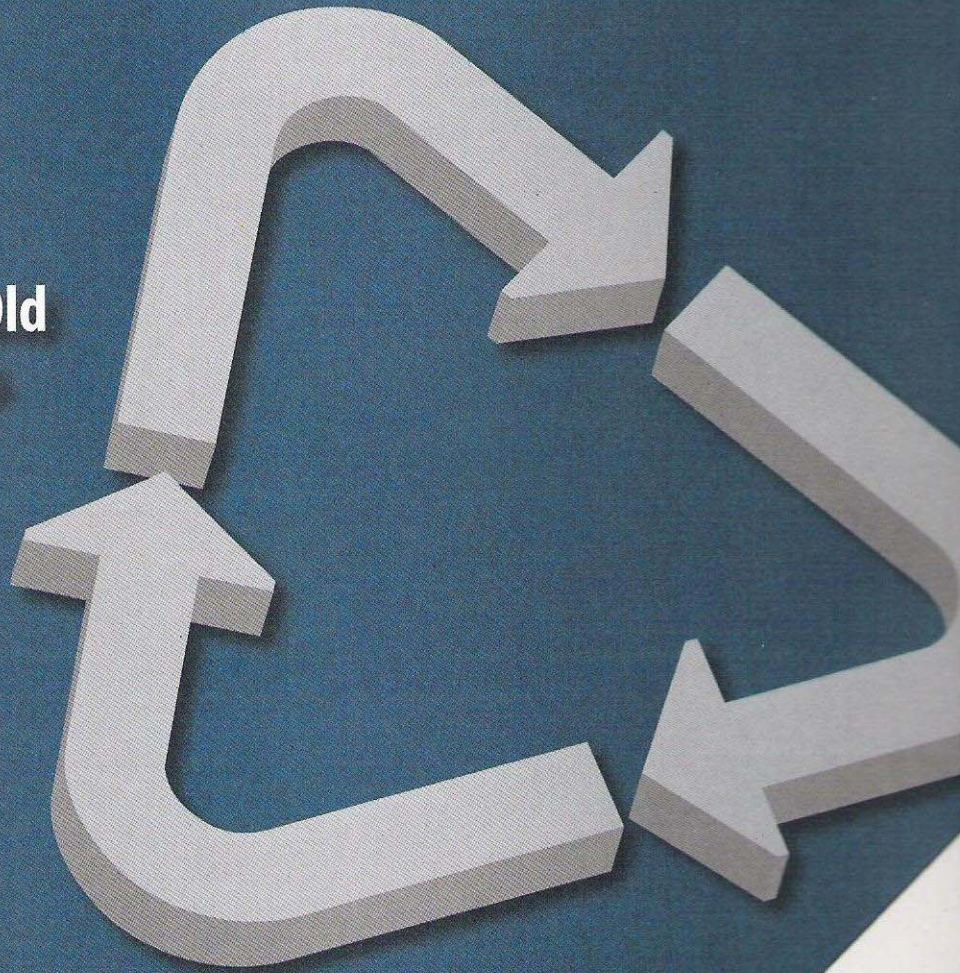
ed+c

environmental design + construction

Giving New Life to Old and Aging Materials

Also inside:

High-Performance Building Envelopes
AIA Green Product Buzz Guide



The Premier Source for Integrated High-Performance Building

www.EDCmag.com

April 2009

A bnp PUBLICATION



PARTNER OF THE YEAR

CertainTeed 

Visit us at booth #1629

PRODUCT FOCUS

EXTERIOR CLADDING AND COATINGS

New Stonework System

UXBRIDGE, MASS. — New World Stoneworks' Natural Stone Facing System utilizes only authentic, natural stone, and uses water and sand to naturally shape each stone according to an architect- and builder-approved design plan, the company reports. Each numbered stone is delivered to the jobsite ready



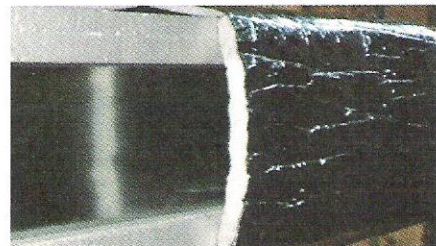
to install with detailed instructions to facilitate installation. The system is designed to reduce installation time by as much as 90 percent when compared to traditional stone construction techniques and eliminate dusty on-site stone cutting. www.newworldstoneworks.com.

New World Stoneworks | Reader Service No. 9

INSULATION

Reflective Duct Insulation

JOHNSTOWN, PA. — GR-8 Duct Reflective Insulation, from TVM Building Products, was specifically developed to address new code requirements that demand a thermal resistance of R-8 around HVAC ducts, the company



reports. GR-8 Duct is comprised of a polyester-based thermal insulating core sandwiched between two highly reflective aluminum facings. The product can reportedly achieve an R-8 around ducts, and its reflective facings can reflect up to 96 percent of radiant heat transfer.



DUNHAM

mechanical + electrical consulting engineering

Great River Energy Headquarters
Awarded LEED-NC Platinum

Dunham provided mechanical and electrical engineering on the first building in Minnesota awarded LEED-NC Platinum. We offer a depth of experience in LEED projects and specialized expertise in:

- Thermal Displacement Ventilation
- CFD Modeling
- Energy Modeling
- Ground Source/Lake Source Energy Systems
- Photovoltaic Systems
- Wind Power
- Daylight Harvesting/Lighting Control

50 South Sixth Street / Suite 1100
Minneapolis, Minnesota 55402-1540
PHONE 612-465-7550 WEB dunhameng.com

Reader Service No. 27 www.EDCmag.com/webcard